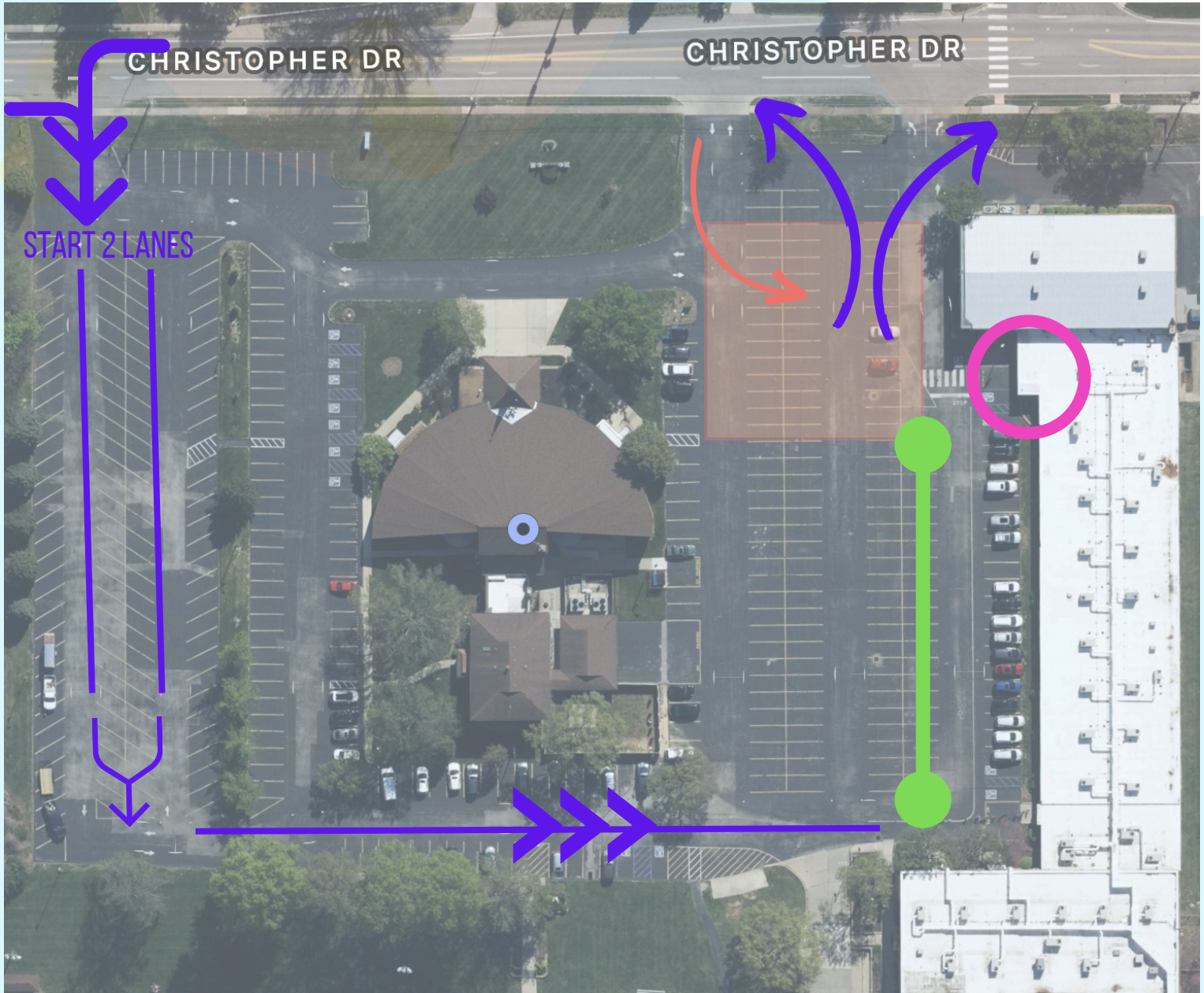


DROP OFF

FRONT DOOR OPENS AT 7:30A AND IS LOCKED AT 7:55A. FOLLOW BELOW ARROWS TO ENTER AND EXIT. ONCE INSIDE THE GREEN, YOU'LL PULL AS FAR UP AS POSSIBLE AND STOP TO LET KIDS OUT THE PASSENGER SIDE OF CAR. IF YOU NEED TO WALK YOUR CHILD IN, PLEASE PARK IN AREA COLORED IN ORANGE AND WALK IN AT CROSS WALK BY FRONT DOOR. STUDENTS CAN ONLY ENTER SCHOOL THROUGH ENTRANCE MARKED IN PINK.



Visit our Parent/Student Handbook for more information